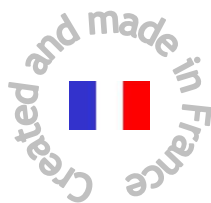




I2MO Evo v2 Pass v3 Technical sheet

Self-propelled mini crane with lifting platform and accompanying operator



Patented model



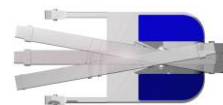
Hydraulic inclination of the jib



Hydraulic vertical mast stroke 600 mm



Hydraulic telescope



Mast rotation (18° without stabilizers)



Electric traction



Technical specifications

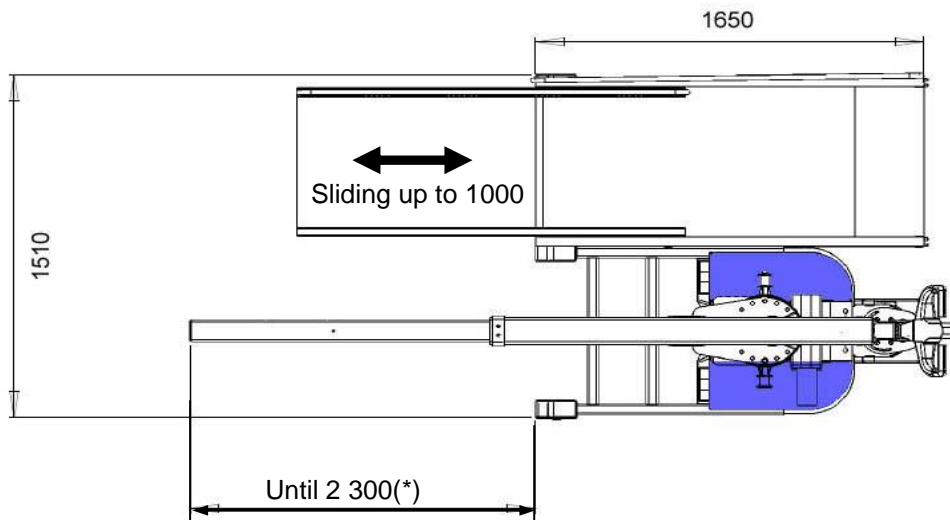
Maximal load	690 kg
Unladen weight (Full option)	1650 kg
Traction batteries	24V – 180 Ah
Hydraulic power station engine	2,2 kW
Translation power engine (option)	0,7 kW

Standard equipment

- Hydraulic inclination of the jib by double acting jack
- Hydraulic vertical mast stroke 600mm
- Mast rotation 18°
- Hydraulic telescope
- Electric traction with variable speed drive
- 2 to 4 axles wired remote control with potentiometer and Emergency stop
- Hour meter and battery charge indicator
- Polyurethane coating wheels
- Tiller with butterfly accelerators and Emergency Reverse
- Hydraulic & electric safety devices
- Anti-tilt system
- Beeper
- Double scissors lifting platform
- Security shutter for the scissors lifting platform
- Integrated battery charger

Options

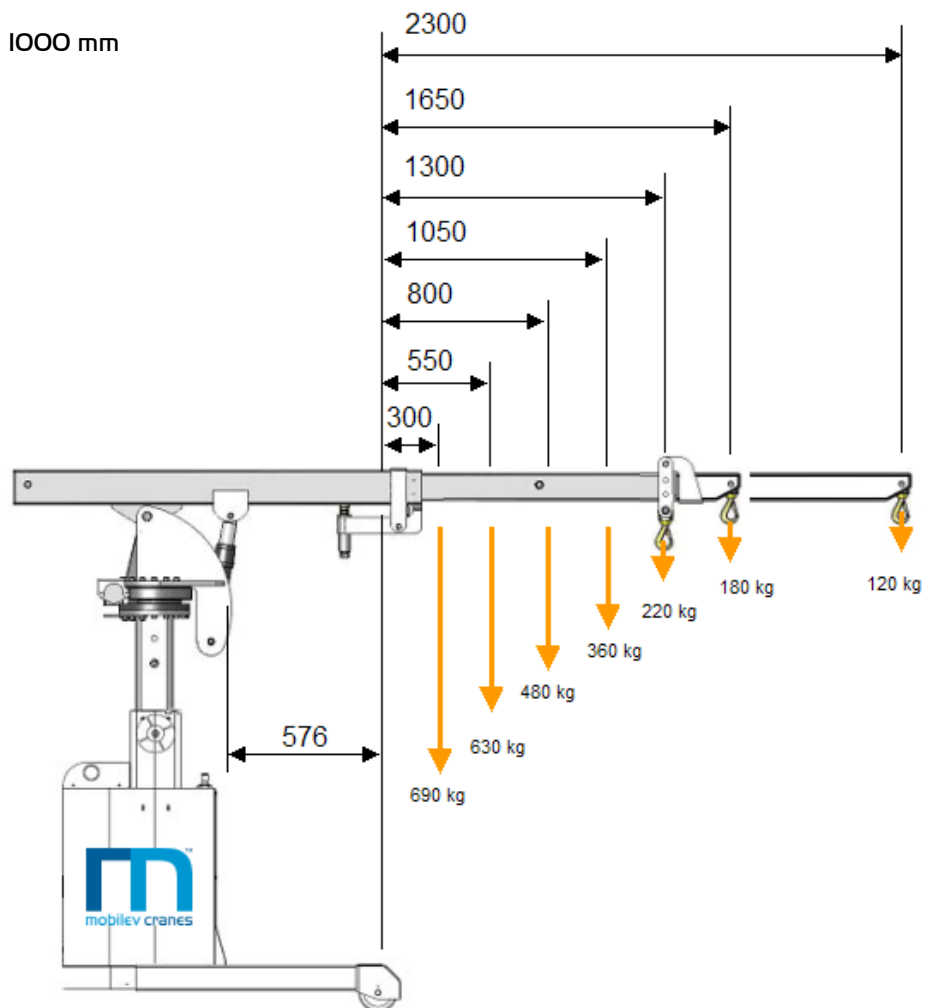
- Additional jib
- Radio remote control
- Flashing light
- Movements' beeper

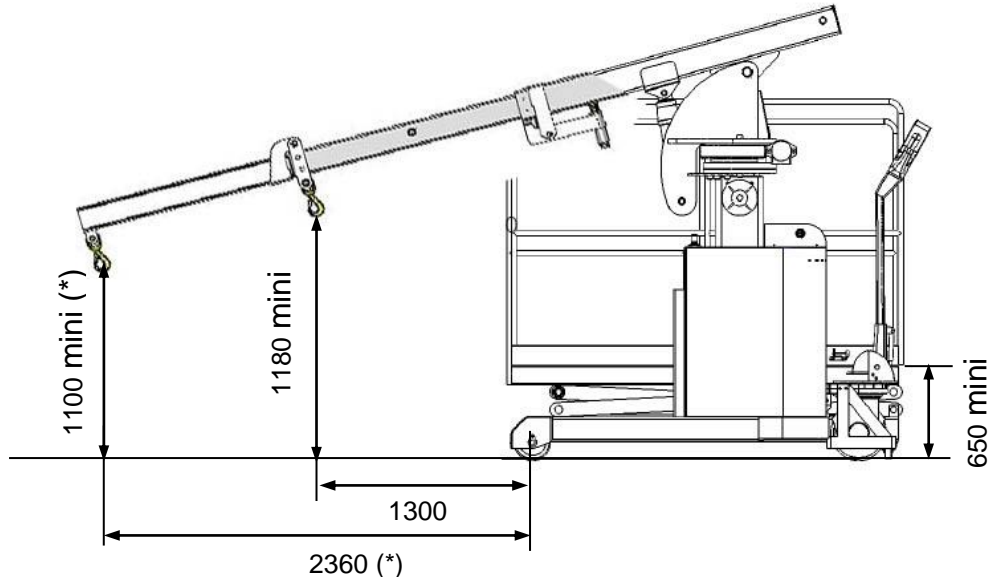


(*) With additional jib length 1000 mm



4 axes wired remote control





(*) With additional jib length 1000 mm

